



# **Anaphraseus Manual - Installation and Use**

**(for Anaphraseus v. 1.23b)**

## **Table of Contents**

.....	1
Anaphraseus Manual - Installation and Use.....	1
Table of Contents.....	1
1. Introduction .....	2
2. Download.....	2
3. Installation.....	2
4. Using Anaphraseus.....	4
4.1 Setting up the TM.....	4
4.2 Setting up the glossary.....	5
4.3 Import a TMX translation memory.....	6
5. The translation process.....	6
6. Other configurations.....	7
7. Working with glossaries.....	7
7. Bugs and enhancements.....	8

# 1. Introduction

## What is Anaphraseus?

Anaphraseus is a CAT, or Computer Aided Translation, tool, designed as an extension to OpenOffice.org, written in StarBasic.

Anaphraseus is intended to provide OpenOffice.org users functionality similar to Wordfast®. Formerly, Anaphraseus was known as OpenWordfast.

Anaphraseus supports fuzzy matches and term recognition, supports importation of .tmx (Translation Memory eXchange) translation memory files, produces clean and unclean documents from your translation efforts.

Anaphraseus is released under the terms of the GNU Public Licence (<http://www.gnu.org/copyleft/gpl.html>).

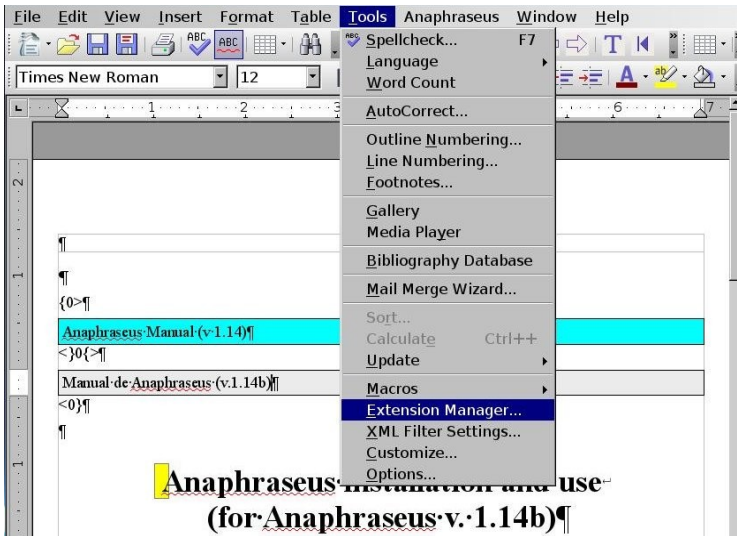
## 2. Download

The latest releases of Anaphraseus may be downloaded at [https://sourceforge.net/project/platformdownload.php?group\\_id=207409](https://sourceforge.net/project/platformdownload.php?group_id=207409)

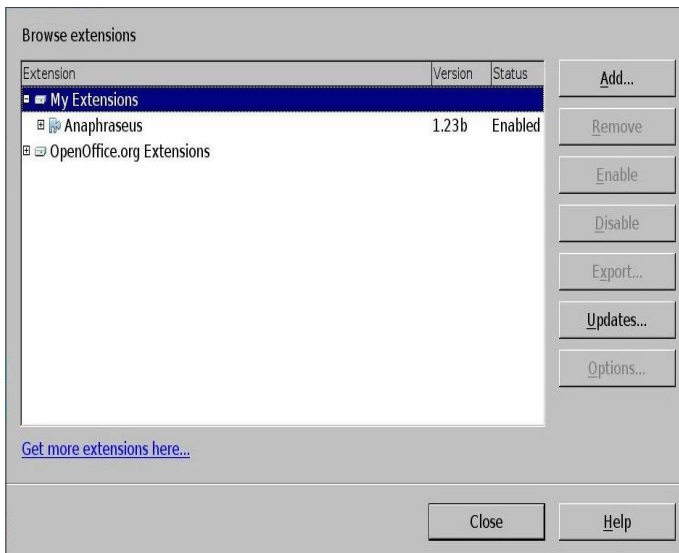
## 3. Installation

Decompress or unzip the downloaded archive in the location of your choice.

Start OpenOffice.org and choose Tools > Extension Manager:



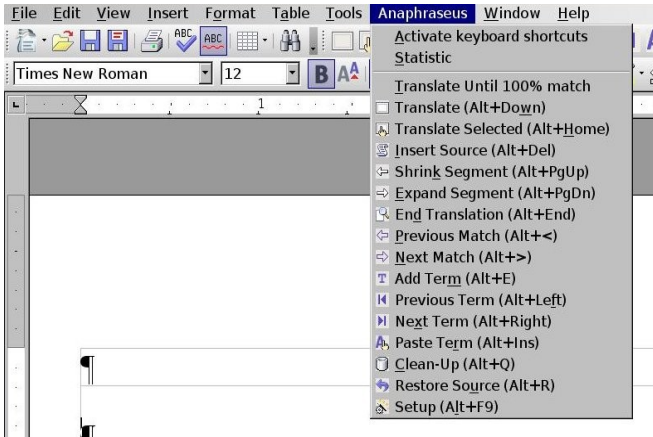
Choose “My extensions” and click “Add” :



## 4 Anaphraseus Manual - Installation and Use

Navigate to the .oxt file from the decompressed archive that you downloaded, and choose “Open”. Anaphraseus is now installed.

You should now see an Anaphraseus menu in the OpenOffice.org menu bar:




You will also see an icon toolbar in the OpenOffice toolbar:



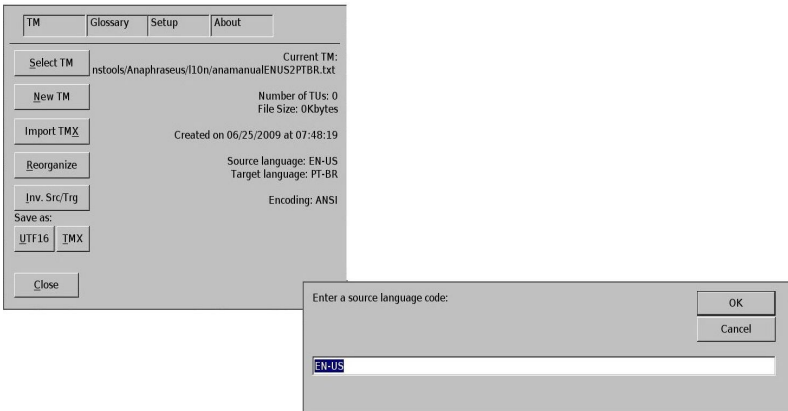
## 4. Using Anaphraseus

### 4.1 Setting up the TM

Open your source document in OpenOffice.org.

From the menu bar, choose Anaphraseus > Setup, or choose the gear icon  in the Anaphraseus toolbar. (or press Alt-F9 if you have keyboard shortcuts enabled for Anaphraseus, which can be done from the same menu).

Select a TM for use, if you have an existing translation memory, or choose **New TM**.



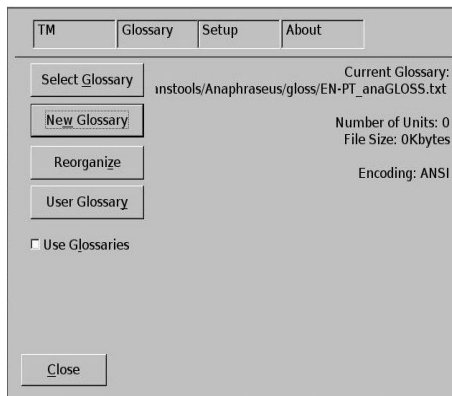
Configure the source and target languages, according to the prompts.

You may now close the Setup dialog and begin translation.

## 4.2 Setting up the glossary

In the Setup dialog, click on the **Glossary** tab.

Choose “Select glossary” or “New glossary” as appropriate.



### 4.3 Import a TMX translation memory.

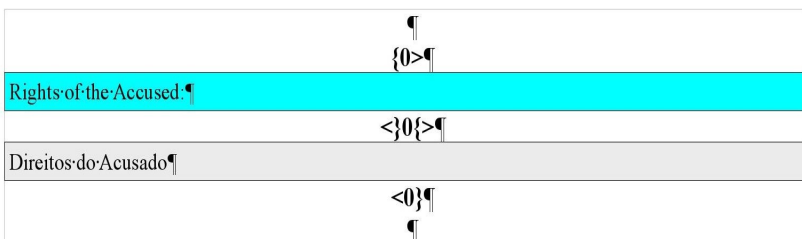
Anaphraseus can import a standard .tmx (translation memory exchange) translation memory, such as those created by OmegaT and other CAT tools.


In the Setup tab, click "Import TMX" and follow the prompts.

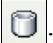
## 5. The translation process.

To start translation, press Alt+Down or click  .

You will see your source text and a space to enter target text.



Enter your target text, then press Alt+End, or click  .

To clean up the document (to remove the source text), press Alt+Q or click  .

## 6. Other configurations

Name	Def	Attributes
Atr0:	%User ID	AU AU Anaphraseus User,t tony
Atr1:		
Atr2:		
Atr3:		
Atr4:		

Untranslatables: 01234567890`!@#%&^\*\_+(){};:\|\_

Delimiters: .!?: Euzzy Threshold: 75

Use clipboard      Key Modifier: Ctrl

Use Office Save/Load dialogs

Close

You can change the modifier key (Alt by default), in the Setup tab of the Setup dialog.

Other project parameters can also be configured in this panel.

## 7. Working with glossaries

When a segment opens, recognized terms (if a glossary is used) are highlighted with dark blue background:

```
{0}>¶
A term1 term2 no term.¶
<}0{>¶
```

To select the next or previous term, press Alt+Left or Alt+Right respectively. The selected term will be double-underlined:

```
{0}>¶
A term1 term2 no term.¶
<}0{>¶
¶
<0}>¶
```

To insert translation for the selected term, press **Alt+Ins**.  
**Note:** So far Anaphraseus has no glossary editing functionality, you cannot add/edit/delete entries or perform any other actions with glossaries from within Anaphraseus. To edit a glossary, use a text editor. To apply changes, you'll have to restart Anaphraseus (restart OpenOffice).

## 7. Bugs and enhancements

Anaphraseus is still in beta status, so don't expect everything to work smoothly (and don't be surprised if nothing works at all ;-).

If you've found a bug, report it to:

[http://sourceforge.net/tracker/?group\\_id=207409&atid=1001492](http://sourceforge.net/tracker/?group_id=207409&atid=1001492).

To file a feature/enhancement request, go to:

[http://sourceforge.net/tracker/?group\\_id=207409&atid=1001495](http://sourceforge.net/tracker/?group_id=207409&atid=1001495).